

SX.e Dictionary Help Tool



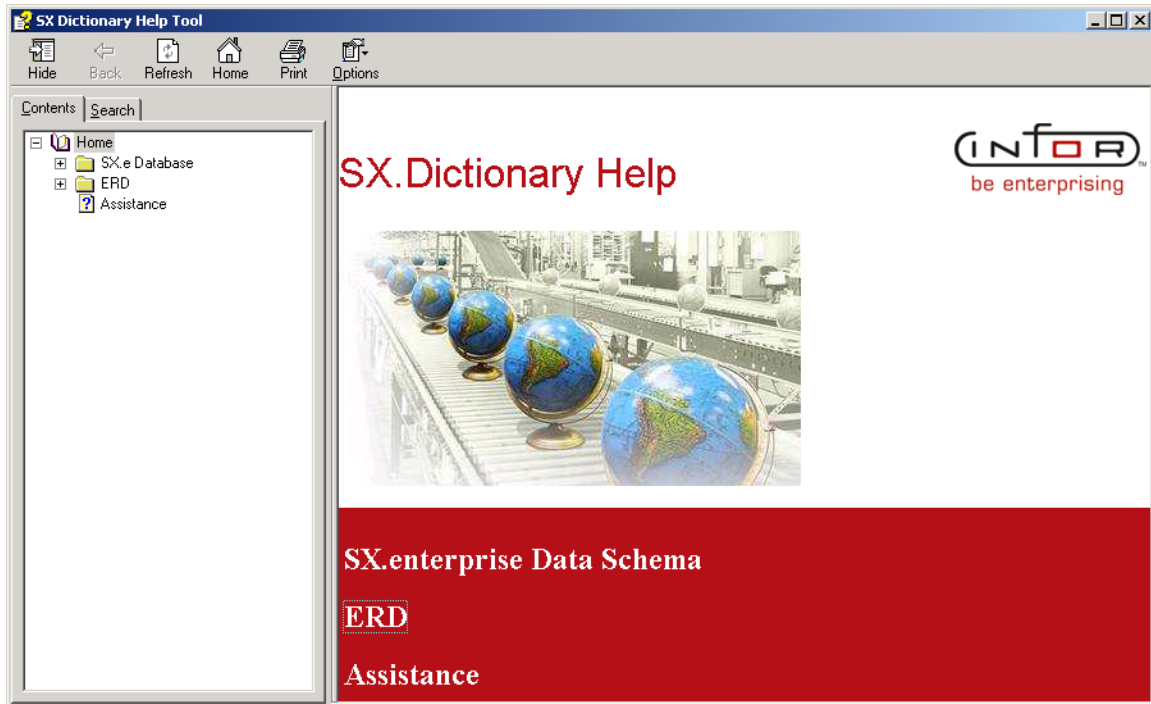
Overview

The SX Dictionary Help tool is a product that allows developers and those needing access to the SX..enterprise database to view the tables, the columns, and the indexes which are provided as part of the database. This tool breaks out each module and shows the tables within the module. Each table is shown with its component columns and indexes.

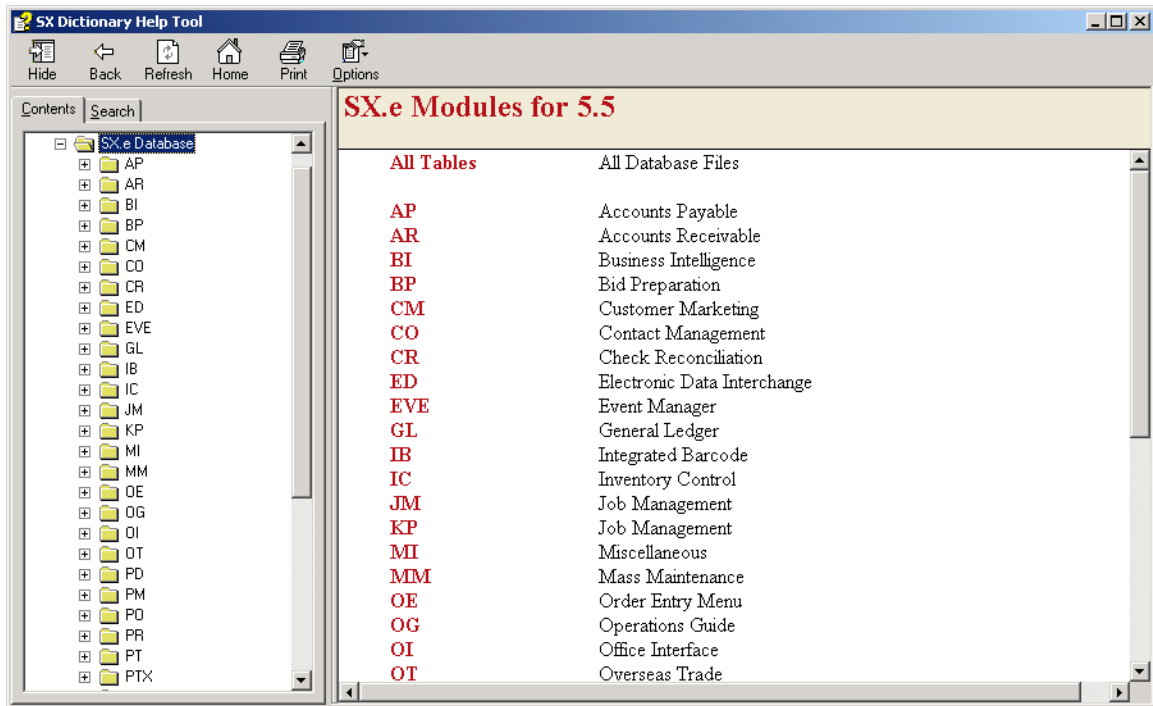
In addition to the describing the database dictionary internals, it also has a section for the Entity Relationship Diagrams on the more complex modules. This permits the developer to see how the tables inter-relate with one another so that joins can be designed in an efficient manner.

The images below will give you a picture of what the tool looks like and how it can be used for the purpose of querying the database and its content.

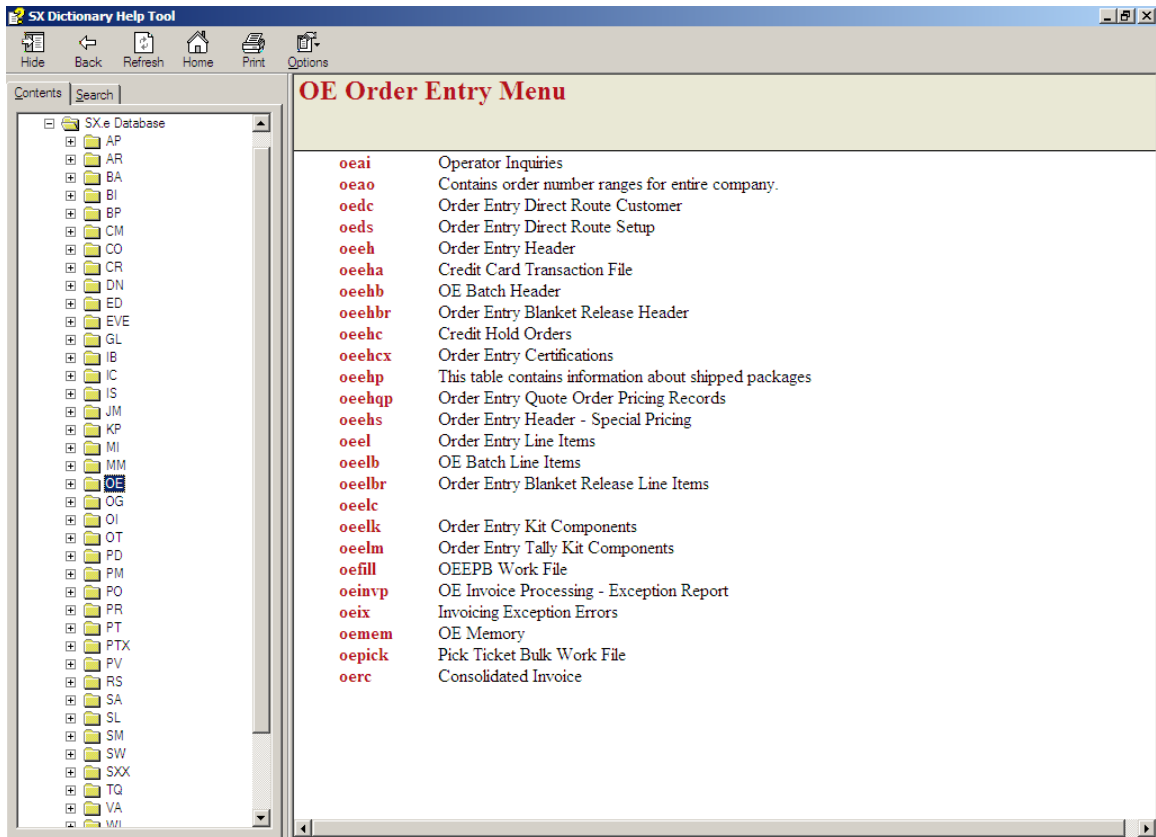
Details



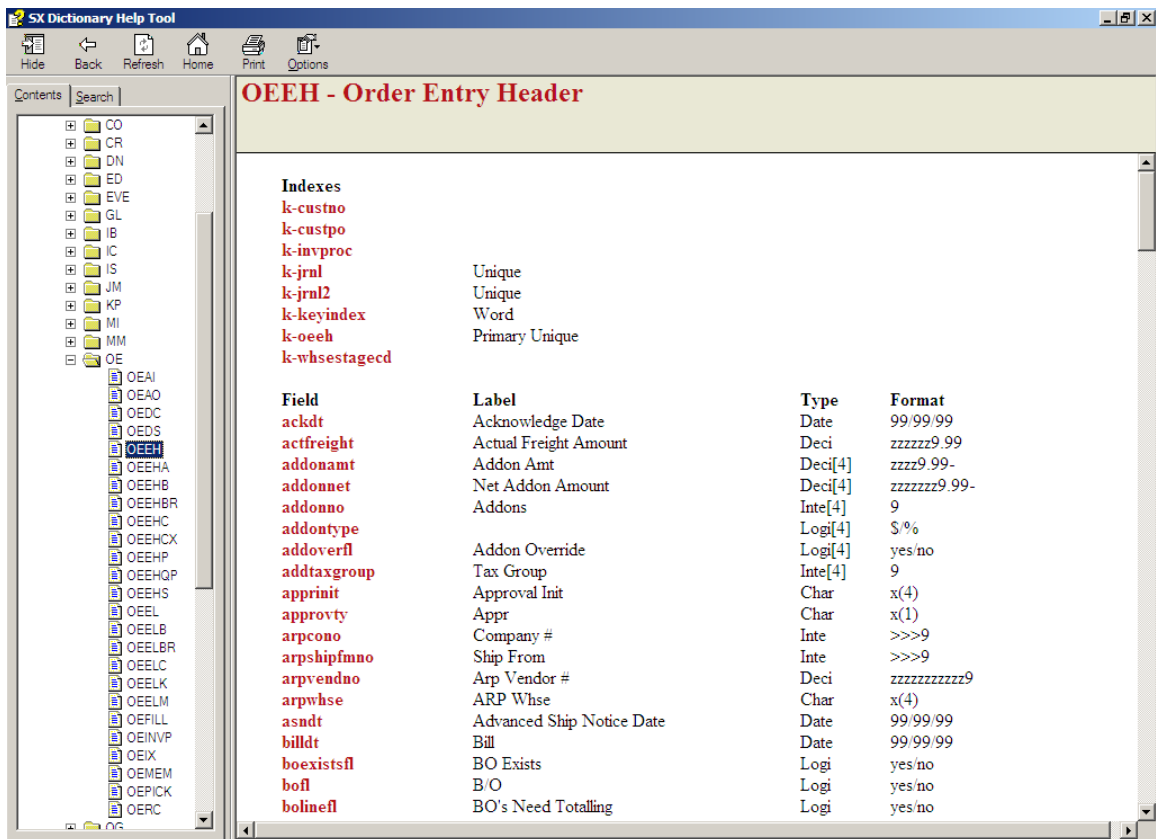
This introductory page shows that this documentation product is using the Microsoft Help functionality.



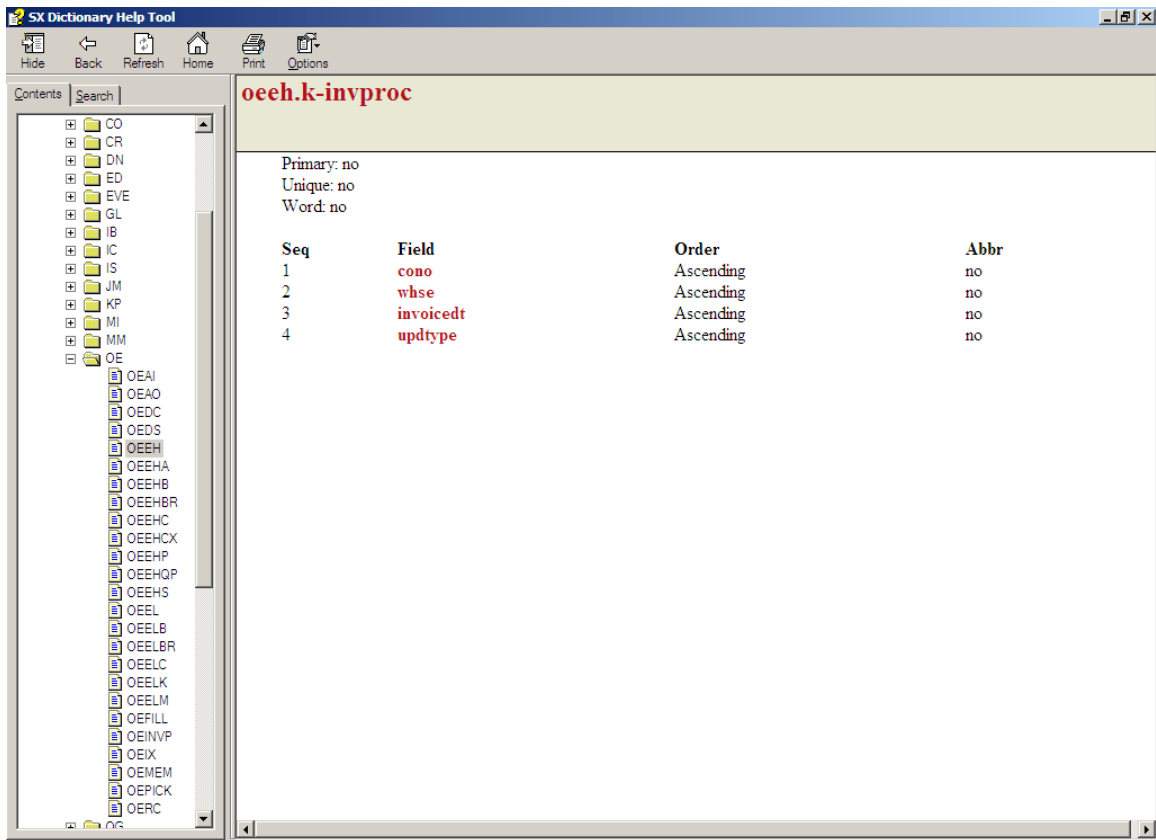
Each table is separated out by module, or the user can select the “All Tables” to view every table in the database



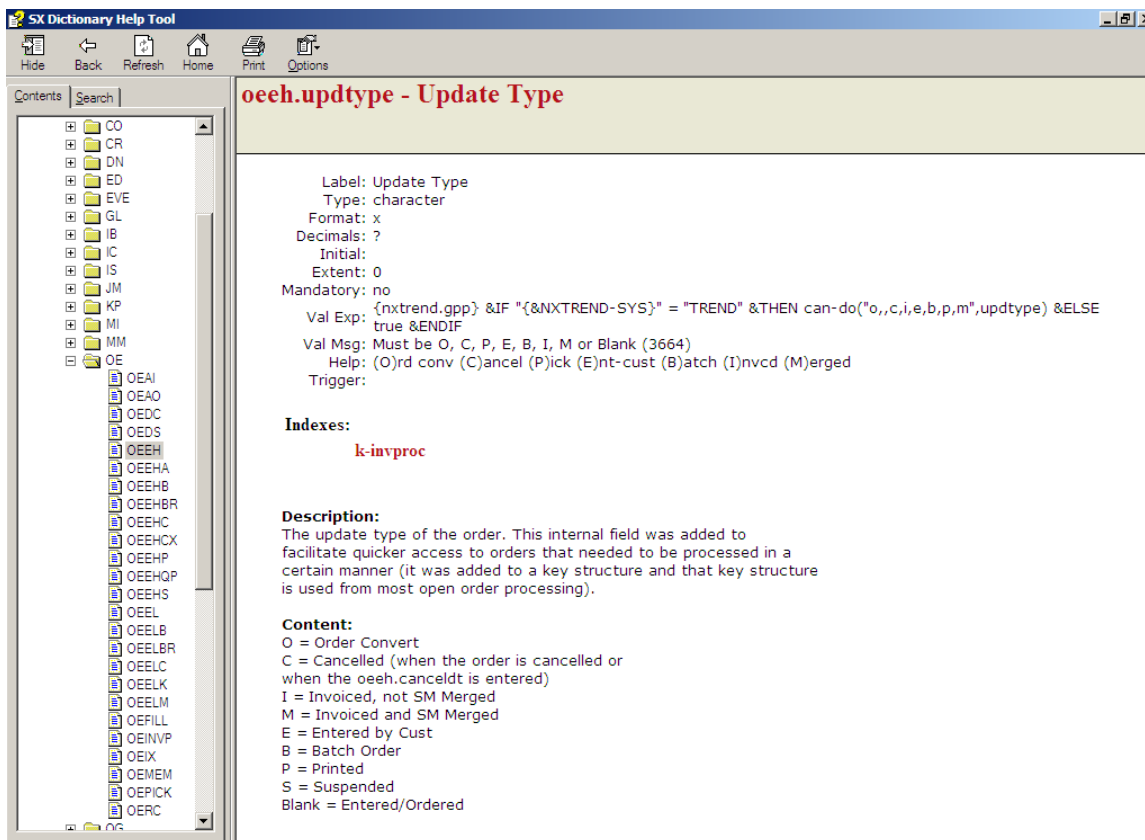
Once a module is selected, the detail tables and a brief description of each table is displayed.



By selecting a table, the user sees a list of the indexes and fields for that table.



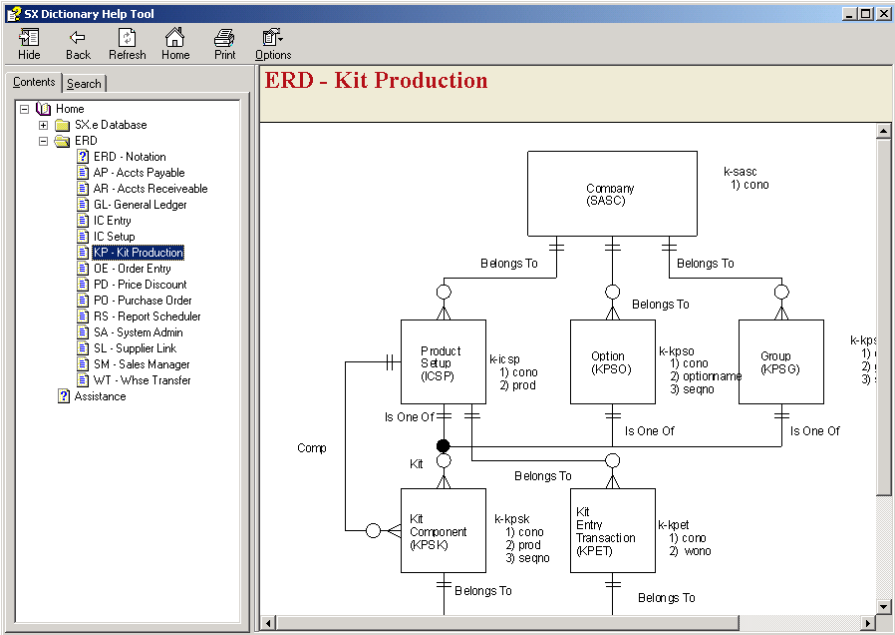
When an index is selected, the components of that index are displayed.



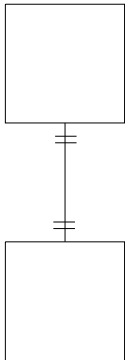
The last level of the Dictionary Help Tool shows detail information associated with an individual field.

- The top section is information found in the Progress database.
- The **Index** section shows a list of all indexes that the current field is part of.
- The **Description** section provides a brief description of the field. (Some descriptions on field such as custno, vendno, prod are considered self explanatory, and not documented).
- The **Content** section is documented when a “type” code is used. These are fields that use letters or codes to represent the certain value.

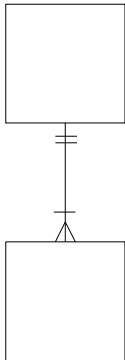
Entity Relationship Diagrams are also available.



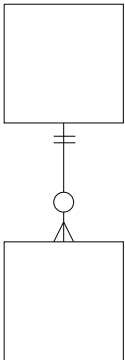
One to One Relationship



One to Many Relationship



One to None or Many Relationship



Infor Global Solutions, Inc.
13560 Morris Rd.
Suite 4100
Alpharetta, GA
30004

